

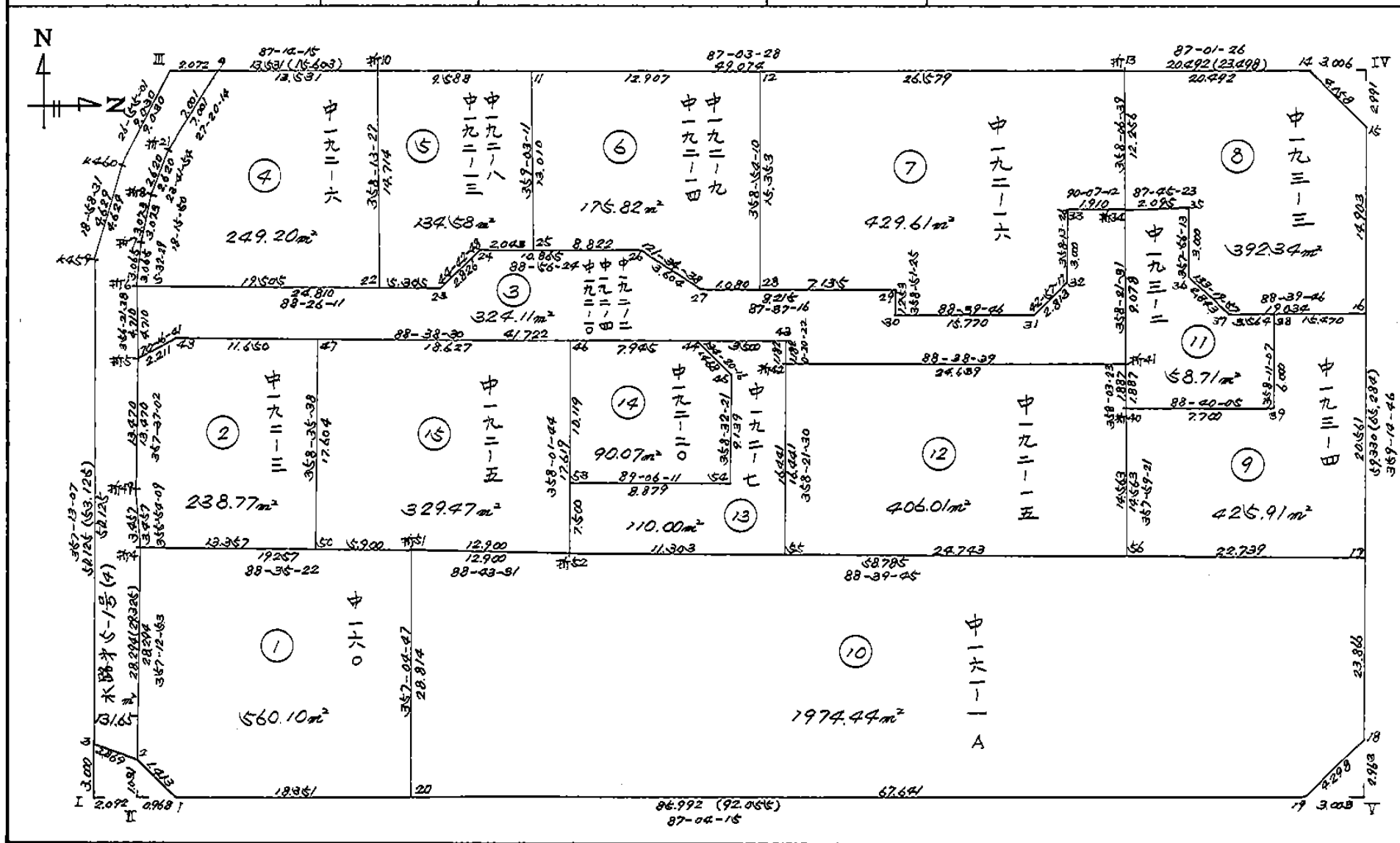
1 0 ブ ロ ッ ク

画地略图


街区番号

5-10

備考




記入者 _____ 点検者 _____


面積計算書		工区	5	ブロック	10	計算者		精算者	備考	全体
点名	X ①	$X_{n-1} - X_{n+1}$ ②	Y ③	$Y_{n-1} - Y_{n+1}$ ④	② × ③	① × ④				
	-150,000.000		-40,000.000							
5-10-1	-341.122	3.414	-608.408	86.896	-2077.104912	-29642.137312				
5-10-2	-340.141	-2.840	-609.425	3.202	1730.767000	-1089.131482				
5-10-3	-338.282	-51.925	-611.610	4.617	31757.849250	-1561.847994				
K-459	-288.216	-54.443	-614.042	0.927	33430.288606	-267.176232				
K-460	-283.839	-12.429	-612.537	-5.593	7613.222373	1587.511527				
(Ⅲ)5-10-3	-275.787	-8.804	-608.449	-19.673	5356.784996	5425.557651				
5-10-10	-275.035	-3.271	-592.864	-64.594	1939.258144	17765.610790				
5-10-13	-272.516	-3.583	-543.855	-69.473	1948.632465	18932.504068				
5-10-14	-271.452	1.771	-523.391	-23.505	-926.925461	6380.479260				
5-10-15	-274.287	62.159	-520.350	-3.822	-32344.435650	1048.324914				
5-10-18	-333.611	62.440	-519.569	2.179	-32441.888360	-726.938369				
5-10-19	-336.727	7.511	-522.529	88.839	-3924.715319	-29914.489953				

倍面積 12061.733132 12061.733132


1/2 6030.866566

面積計算書		工区	5	ブロック	10	計算者		精算者	備考
点名	X ①	$X_{n-1} - X_{n+1}$ ②	Y ③	$Y_{n-1} - Y_{n+1}$ ④	② × ③	① × ④			
5-10-4	-150,311.881	-3.119	-40,610.800	13.600	126665.085200	-2044241.581600			
5-10-49	-150,308.433	-16.906	-40,611.047	0.807	686570.360582	-121298.905431			
5-10-5	-150,294.975	-14.204	-40,611.607	-1.521	576847.265828	228598.656975			
5-10-48	-150,294.229	-1.022	-40,609.526	-13.728	41502.935572	2063239.175710			
5-10-47	-150,293.953	17.323	-40,597.879	-12.079	-703277.057917	1815400.658280			
5-10-50	-150,311.552	17.928	-40,597.447	12.921	-727831.029816	-1942175.563390			
				倍面積	477.559449	477.559456			
				1/2	238.779724				


192-3

面積計算書		工区	5	ブロック	10	計算者		精算者	備考
点名	X ①	$X_{n-1} - X_{n+1}$ ②	Y ③	$Y_{n-1} - Y_{n+1}$ ④	② × ③	① × ④			
5-10-5	-150,294.975	-3.955	-40,611.607	2.380	160618.905685	-357702.040500			
5-10-6	-150,290.274	-5.378	-40,611.906	-24.502	218410.830468	3682412.293540			
5-10-23	-150,289.597	-2.685	-40,587.105	-26.789	108976.376925	4026108.014030			
5-10-24	-150,287.589	-2.209	-40,585.117	-12.851	89652.523453	1931345.806230			
5-10-26	-150,287.388	1.686	-40,574.254	-13.933	-68408.192244	2093954.177000			
5-10-27	-150,289.275	1.546	-40,571.184	-11.278	-62723.050464	1694962.443450			
5-10-29	-150,288.934	0.912	-40,562.976	-8.233	-36993.434112	1237328.793620			
5-10-30	-150,290.187	0.885	-40,562.951	-15.791	-35898.211635	2373232.342910			
5-10-31	-150,289.819	-2.427	-40,547.185	-17.683	98408.017995	2657574.869370			
5-10-32	-150,287.760	-5.058	-40,545.268	-1.824	205077.965544	274124.874240			
5-10-33	-150,284.761	-2.995	-40,545.361	-1.817	121433.356195	273067.410737			
5-10-34	-150,284.765	9.078	-40,543.451	-2.170	-368053.448178	326117.940050			
5-10-41	-150,293.839	9.657	-40,543.191	24.372	-391525.595487	-3662961.444100			
5-10-42	-150,294.422	-0.599	-40,567.823	24.625	24300.125977	-3701000.141750			

192-2
92-4
192-10

面積計算書		工区	5	ブロック	10	計算者		精算者	備考
点名	X ①	$X_{n-1} - X_{n+1}$ ②	Y ③	$Y_{n-1} - Y_{n+1}$ ④	② × ③	① × ④			
5-10-34	-150,284.765	-9.156	-40,543.451	-1.833	371215.837356	275471.974245			
5-10-35	-150,284.683	2.916	-40,541.358	-2.201	-118218.599928	330776.587283			
5-10-36	-150,287.681	4.949	-40,541.250	-2.176	-200638.646250	327025.993856			
5-10-37	-150,289.632	1.868	-40,539.182	-5.631	-75727.191976	846280.917792			
5-10-38	-150,289.549	5.914	-40,535.619	-3.753	-239727.650766	564036.677397			
5-10-39	-150,295.546	6.176	-40,535.429	7.508	-250346.809504	-1128418.959360			
5-10-40	-150,295.725	-1.707	-40,543.127	7.762	69207.117789	-1166595.417450			
5-10-41	-150,293.839	-10.960	-40,543.191	0.324	444353.373360	-48695.203836			
				倍面積	117.430081	117.430073			
				1/2	58.715040				

中 193-2

面積計算書		工区	5	ブロック	10	計算者		精算者	備考
点名	X ①	$X_{n-1} - X_{n+1}$ ②	Y ③	$Y_{n-1} - Y_{n+1}$ ④	② × ③	① × ④			
(Ⅱ)5-10-3	-150,275.787	-8.152	-40,608.449	-6.158	331040.076248	925398.296346			
5-10-9	-150,275.687	6.119	-40,606.379	1.145	-248470.433101	-172065.661615			
5-10-21	-150,281.906	8.618	-40,609.594	4.268	-349973.481092	-641403.174808			
5-10-8	-150,284.305	5.317	-40,610.647	2.016	-215926.810099	-302973.158880			
5-10-7	-150,287.223	5.969	-40,611.610	1.259	-242410.700090	-189211.613757			
5-10-6	-150,290.274	7.752	-40,611.906	-0.003	-314823.495312	450.870822			
5-10-5	-150,294.975	18.159	-40,611.607	-0.859	-737466.171513	129103.383525			
5-10-49	-150,308.433	16.906	-40,611.047	-0.807	-686570.360582	121298.905431			
5-10-4	-150,311.881	31.708	-40,610.800	-1.622	-1287687.246400	243805.870982			
5-10-2	-150,340.141	26.401	-40,609.425	0.810	-1072129.429420	-121775.514210			
5-10-3	-150,338.282	-51.925	-40,611.610	4.617	2108757.849250	-694111.847994			
K-459	-150,288.216	-54.443	-40,614.042	0.927	2211150.288600	-139317.176232			
K-460	-150,283.839	-12.429	-40,612.537	-5.593	504773.222373	840537.511527			

倍面積 263.308862 263.308863

1/2 131.654431

水路第5-1号(4)

B.NO. 5-10 各下面積計算書

符番	地番	スミキリ	地積	摘要
1	中 160		560.10	
2	中 192-3		238.77	
3	中 192-2・-4・-10		324.11	
4	中 192-6		249.20	
5	中 192-8・-13		134.58	
6	中 192-9・-14		175.82	
7	中 192-16		429.61	
8	中 193-3		392.34	
9	中 193-4		425.91	
10	中 161-1A		1974.44	
11	中 193-2		58.71	
12	中 192-15		406.01	
13	中 192-7		110.00	
14	中 192-20		90.07	
15	中 192-5		329.47	
	水路第5-1号(4)		131.65	
		計	6030.79	
	全 体		6030.86	