

街区略図

工区

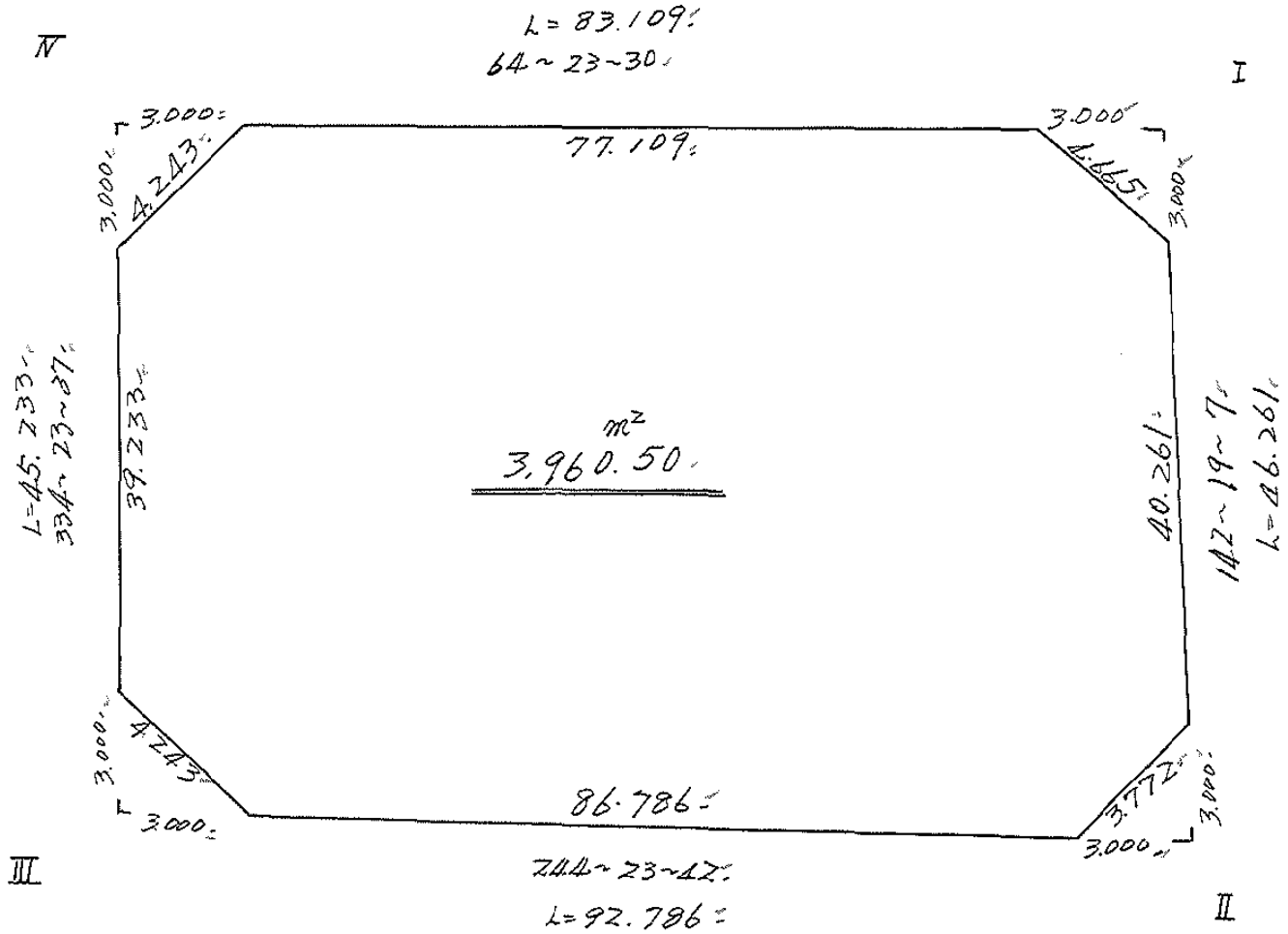
ブロック

4

記入者



点検者



# 面積計算書

工  
区

フ  
ロ  
ック

4

計  
算  
者



精  
算  
者

備  
考

全体

点	①	②	③	④	⑤	⑥	③ × ⑤		② × ⑥	
	X	X - (定数)	X <sub>n-1</sub> - X <sub>n+1</sub>	Y	Y - (定数)	Y <sub>n-1</sub> - Y <sub>n+1</sub>	+	-	+	-
I	<sup>-153,</sup> 976.117	<sup>-153, 990-</sup> 76.117	+ 0.691	<sup>-34,</sup> 505.376	<sup>-34, 400-</sup> 105.376	- 103.223			72, 814.816	78, 57.025 091
II	<sup>-150,</sup> 012.729	112.729	+ 76.711	477.099	77.099	+ 55.396			5914.264 678	6, 204.735 684
III	052.829	152.829	- 0.691	560.772	160.772	+ 103.223	111.093 452			15, 775.364 644
IV	012.039	112.039	- 76.711	590.321	180.321	- 55.396	13, 832.604 231			6, 206.457 083
							13, 943.697 683	5, 987.079 494	14, 063.482 139	22, 020.100 328
							7, 956.618 189			7, 956.618 189
										$X^2 = 3978.309 0945$
										$3978.30 - (440 + 440 + 450 + 450) = 3960.50$

# 画地計算

画地略図

工区

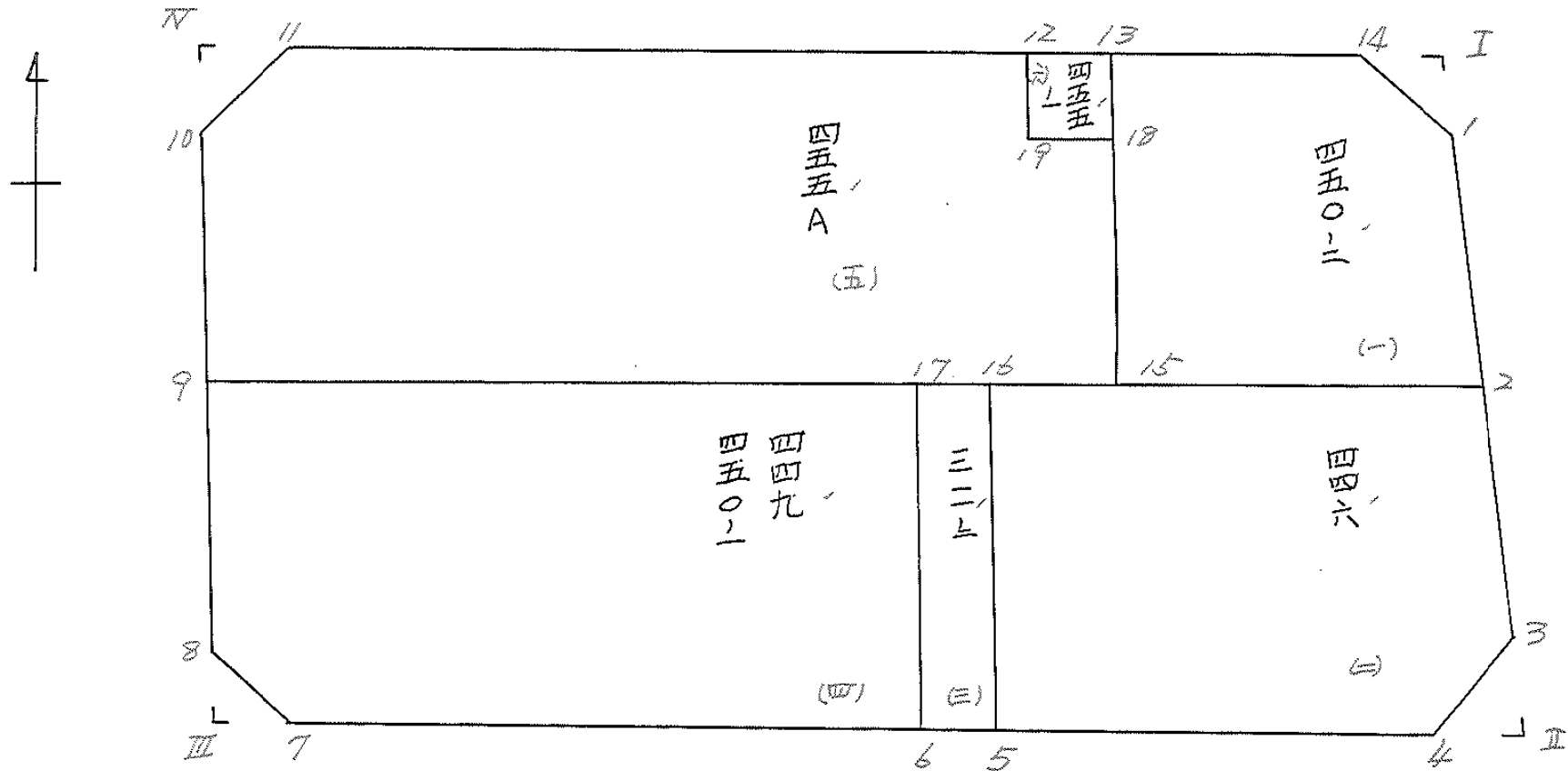
ブロック

4

記入者



点検者



# 面積計算書

工区

ブロック

4

計算者



精算者



備考

41 450-2

(1) 446

1)

2)

点	①	②	③	④	⑤	⑥	③ × ⑤	② × ⑥
	X	X - (定数)	X <sub>n-1</sub> - X <sub>n+1</sub>	Y	Y - (定数)	Y <sub>n-1</sub> - Y <sub>n+1</sub>	+	-
1	<sup>-153.</sup> 978.491	<sup>-153.900-</sup> 78.491	+ 16.978	<sup>-34.</sup> 503.547	<sup>-34.400-</sup> 103.547	- 16.920	1757.936076	1320.218620
2	994.392	84.392	+ 27.774	491.261	91.261	+ 12.495	2534.683014	1179.428040
15	<sup>-154.</sup> 106.265	106.265	- 8.485	516.037	116.037	+ 34.540	984.573945	8670.393100
13	<sup>-153.</sup> 985.907	85.907	- 28.851	525.801	125.801	- 7.956	3629.484651	683.476092
14	977.414	77.414	- 7.416	508.091	108.091	- 22.259	801.528696	1723.158226
							5415.587292	44292.619090
							3726.852938	4849.821140
							1122.968202	1122.968202
							$\times \frac{1}{2} = 561.484101$	
2	<sup>-153.</sup> 994.392	<sup>-153.900-</sup> 94.392	+ 0.577	<sup>-34.</sup> 491.261	<sup>-34.400-</sup> 91.261	- 44.436	52.657597	4194.402912
3	<sup>-154.</sup> 110.355	110.355	+ 19.633	478.932	78.932	+ 11.458	1549.671956	1264.447590
4	114.025	114.025	+ 19.859	479.803	79.803	+ 34.651	1584.807777	3951.080275
5	130.214	130.214	- 4.247	513.583	113.583	+ 43.565	482.387001	5672.772910
16	109.778	109.778	- 35.822	523.368	123.368	- 22.322	11419.288496	2450.464516
							4901.675497	3187.137330
							7909.315018	9623.853125
							1714.538167	1714.538167
							$\times \frac{1}{2} = 857.2690835$	

# 面積計算書

工  
区

ブ  
ロ  
ック

4

計  
算  
者

精  
算  
者

備  
考

(三) 311-2  
(四) 449  
450-1

(三)

(四)

点	①	②	③	④	⑤	⑥	③ × ⑤		② × ⑥	
	X	X-(定数)	X <sub>n-1</sub> -X <sub>n+1</sub>	Y	Y-(定数)	Y <sub>n-1</sub> -Y <sub>n+1</sub>	+	-	+	-
16	<sup>-154.</sup> 009.778	<sup>-154.000.</sup> 9.778	+ 18.616	<sup>-34.</sup> 523.369	<sup>-34.510.</sup> 13.369	- 13.521			248.858688	132.795018
5	030.214	30.214	+ 22.255	513.593	3.593	- 5.989			79.739665	180.951646
6	032.033	32.033	- 18.616	517.379	7.379	+ 13.521	137.367464			435.040173
17	011.598	11.598	- 22.255	527.164	17.164	+ 5.989	381.984820			69.460422
							519.352784	328.598353	313.746664	504.500595
							190.753931			190.753931
							x 1/2 = 95.3769655			
17	<sup>-154.</sup> 011.598	<sup>-154.000.</sup> 11.598	- 0.363	<sup>-34.</sup> 527.164	<sup>-34.500.</sup> 27.164	- 53.185	986.0532			616.839630
6	032.033	32.033	+ 39.933	517.379	17.379	+ 30.902			693.995607	989.883766
7	051.531	51.531	+ 18.090	558.066	58.066	+ 44.690			1050.413940	2302.920390
8	050.123	50.123	- 19.135	562.069	62.069	+ 12.498	1187.690315			526.437254
9	032.396	32.396	- 38.525	570.564	70.564	- 34.905	2718.478100			1130.782380
							3916.028947	1744.409547	1747.622010	3919.241440
							2171.619400			2171.619400
							x 1/2 = 1085.809700			

# 面積計算書

工区

ブロック

4

計算者

精算者

備考

(E) 455A

(G) 455-1

点	①	②	③	④	⑤	⑥	③ × ⑤		② × ⑥	
	X	X - (定数)	X <sub>n-1</sub> - X <sub>n+1</sub>	Y	Y - (定数)	Y <sub>n-1</sub> - Y <sub>n+1</sub>	+	-	+	-
(五) 12	<sup>-153.</sup> 987.852	<sup>-153.900-</sup> 87.852	- 19.501	<sup>-34.</sup> 529.859	<sup>-34.500-</sup> 29.859	- 49.382	582.280359		4338.307461	
19	991.240	91.240 + 1.443		528.234	29.234 - 5.683			40.741662	518.516920	
18	989.295	89.295 + 15.025		524.176	24.176 - 12.197			363.244400	1089.131115	
15	<sup>-154.</sup> 106.265	106.265 + 43.101		515.037	16.037 + 46.398			691.210737		4929420820
9	032.396	132.396 + 8.478		570.564	70.564 + 62.988			598.241592		8339.359248
10	014.743	114.743 - 21.655		579.025	79.025 + 7.052			1711.286375		809167636
11	010.741	110.741 - 26.891		577.616	77.616 - 49.166			2087.171856		5444.692006
								4380.738590	1693.438391	11390.647605
								2687.300199		2687.300199
										$\times \frac{1}{2} = 1343.6500995$
(六) 13	<sup>-153.</sup> 985.907	<sup>-153.980-</sup> 5.907	+ 1.443	<sup>-34.</sup> 525.801	<sup>-34.520-</sup> 5.801	- 5.683		8.370843	33.569481	
18	989.295	9.295 + 5.333		524.176	4.176 + 2.433			22.270608		22.614735
19	991.240	11.240 - 1.443		528.234	8.234 + 5.683			11.881667		53.876920
12	987.852	7.852 - 5.333		529.859	9.859 - 2.433			52.578047		19.103916
								64.459709	30.641451	52.673397
								33.818258		86.491655
										33.818258
										$\times \frac{1}{2} = 16.909129$





# 面積計算書

工区

ブロック

4

計算者



精算者



備考

陽切Ⅳ,Ⅶ

Ⅳ

Ⅶ

点	①	②	③	④	⑤	⑥	③ × ⑤		② × ⑥		
	X	X-(定数)	X <sub>n-1</sub> -X <sub>n+1</sub>	Y	Y-(定数)	Y <sub>n-1</sub> -Y <sub>n+1</sub>	+	-	+	-	
7	-154. 051.531	-154.050 1.531	+ 2.705	-34. 558.066	-34.550 8.066	-1.297			21.818 530	1.985 707	
Ⅳ	052.828	2.828	- 1.408	560.772	10.772	+4.003	15.166 976				11.320 484
8	050.123	0.123	- 1.297	562.069	12.069	- 2.706	15.653 493			0.332 838	
							30.820 469	21.818 530	2.318 545	11.320 484	
							9.001 939				9.001 939
									$\times \frac{1}{2} = 4.500 9695$		
									<u>4.501</u>		
11	-154. 010.741	-154.010 0.741	+ 2.705	-34. 577.616	-34.570 7.616	- 1.296			20.601 280	0.960 336	
10	014.743	4.743	+ 1.297	579.025	9.025	+ 2.705			11.705 425		12.829 815
Ⅶ	012.038	2.038	- 4.002	580.321	10.321	- 1.409	41.304 642			2.871 542	
							41.304 642	32.306 705	3.831 878	12.829 815	
							8.997 937				8.997 937
									$\times \frac{1}{2} = 4.498 9685$		
									<u>4.501</u>		

計年月日	50 7 23	計算者	検査者
------	---------------	-----	-----

B.NO. 4

各筆面積計算書

地番	算式	隅切	地積	摘要
1	450-2 /		561.48%	
2	446 /		857.26%	
3	311-2 /		95.37%	
4	449 450-1 /		1,085.80%	
5	455A /		1,343.65%	
6	455-1 /		16.90%	
		合計	3,960.46%	…空地6筆
		全体	3,960.50%	
		差	- 0.04%	