

街区略図

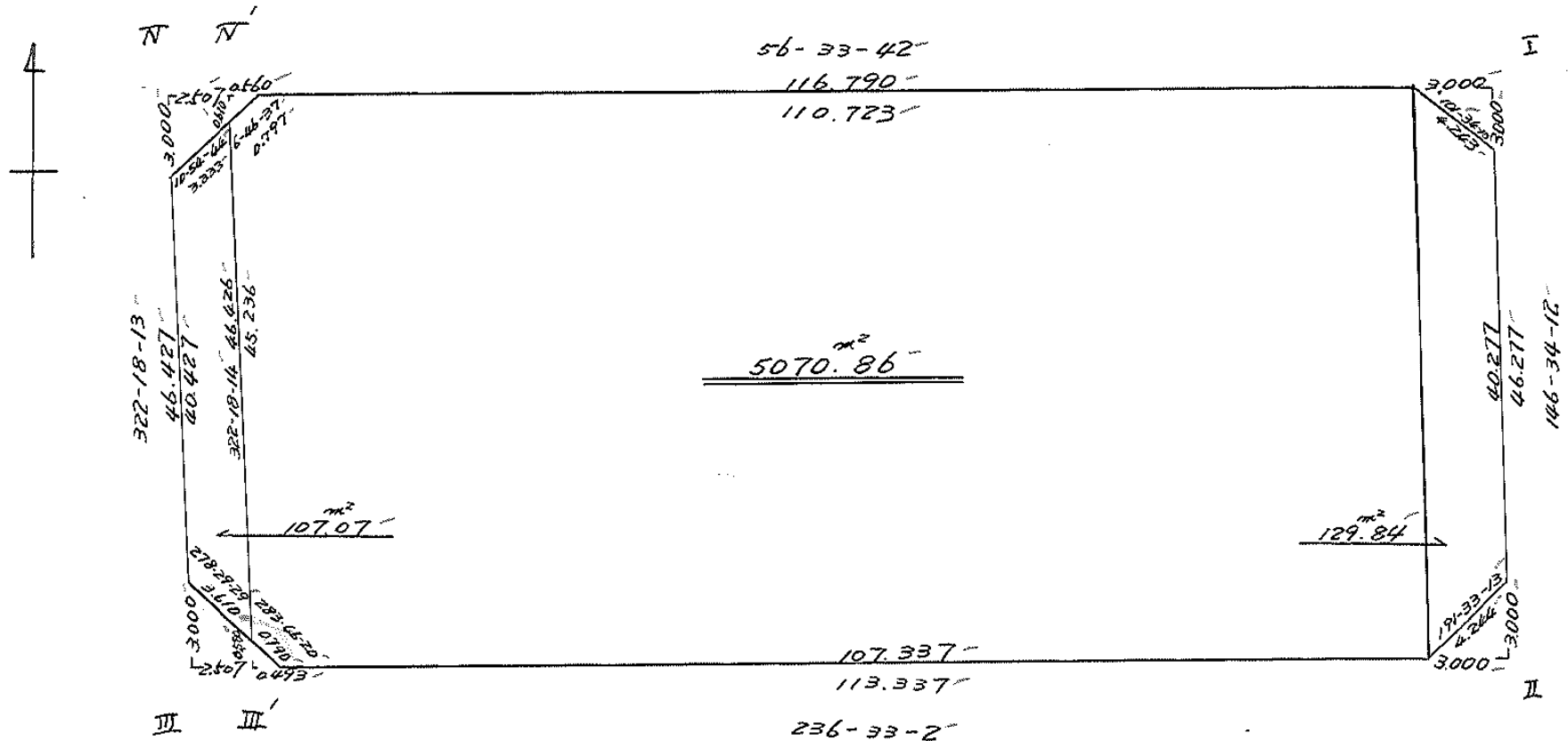
工区

ブロック

7

記入者

点検者



# 面積計算書

工  
区

ブ  
ロ  
ック

7

計  
算  
者



精  
算  
者

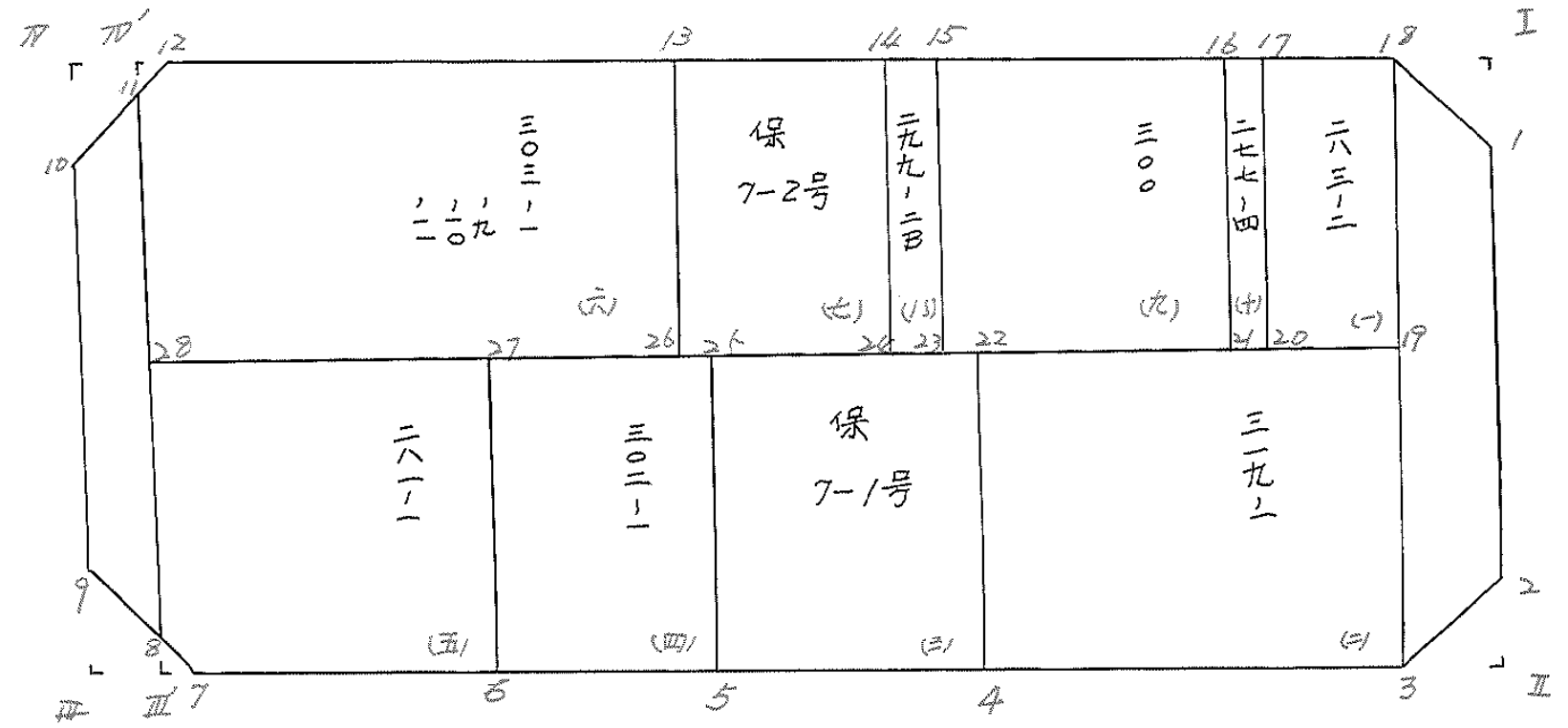
備  
考

全体

点	①	②	③	④	⑤	⑥	③	×	⑤	②	×	⑥	
	X	X - (定数)	X <sub>n-1</sub> - X <sub>n+1</sub>	Y	Y - (定数)	Y <sub>n-1</sub> - Y <sub>n+1</sub>	+		-	+		-	
I	<sup>-153.</sup> 867.203	<sup>-153.800.</sup> 67.203	- 25.735	<sup>-34.</sup> 434.725	<sup>-34.400.</sup> 34.725	- 122.854	893.647875			8262.877662			
II	905.824	105.824	+ 101.092	409.230	9.230	+ 69.070			933.079160			7309.263680.	
III	968.295	168.295	+ 25.735	503.795	103.795	+ 122.954			2671.164325			20592.543430.	
IV	931.559	131.559	- 101.092	532.184	132.184	- 69.070	13362.704928.			9086.780130.			
							14256.392807		3604.243485	17349.657792		28001.86710.	
							10652.149318					10652.149318	
									x 1/2 =	5326.072659			
	水1 > 足切I > III > IV > V												
	5326.07 = (129.84 + 107.07 + 4.50 + 4.50 + 4.62 + 4.68) = 5070.86 =												
										255.21 =			

# 地 計 算

画地略図	工区	ブロック	7	記入者		点検者	
------	----	------	---	-----	---	-----	---



# 面積計算書

工区

ブロック

7

計算者

精算者

備考

(5) 281-1

(6) 303-9, -10, -11, -1

点	①	②	③	④	⑤	⑥	③ × ⑤		② × ⑥	
	X	X-(定数)	X <sub>n-1</sub> -X <sub>n+1</sub>	Y	Y-(定数)	Y <sub>n-1</sub> -Y <sub>n+1</sub>	+	-	+	-
(5) 27	<sup>-153.</sup> 933.069	<sup>-153.900-</sup> 33.069	+ 3.613	<sup>-34.</sup> 492.243	<sup>-34.400-</sup> 92.243	- 36.277			333.165569	1199.606113
6	952.269	52.269	+ 33.573	479.536	79.536	+ 9.079			2670.262128	474.550251
7	966.642	66.642	+ 14.185	501.292	101.292	+ 22.523			1436.827020	1520.977766
8	966.454	66.454	- 17.986	502.059	102.059	+ 14.521	1825.633174			964.978534
28	948.656	48.656	- 33.385	515.813	115.813	- 9.846	3866.417005			479.066976
							5702.050179		11440.254717	711089.2900.506551
							1261.795462			1261.795462
							x 1/2 = 630.897731			
(6) 13	<sup>-153.</sup> 905.158	<sup>-153.900-</sup> 5.158	- 5.302	<sup>-34.</sup> 492.203	<sup>-34.400-</sup> 92.203	- 50.285	488.860306			259.370030
26	924.567	24.567	+ 43.498	479.340	79.340	+ 23.610			3451.131320	580.026870
28	948.656	48.656	+ 6.093	515.813	115.813	+ 10.379			705.648609	2451.240624
11	930.660	30.660	- 18.787	529.719	129.719	+ 13.812	2437.030853			452.475920
12	929.869	29.869	- 25.502	529.625	129.625	- 37.516	3305.696250			1120.565410
							6,232.587909		11,56.779929	1379.935434
							2074807980			3454743444
										2074807980
							x 1/2 = 1037.403990			

# 面積計算書

工  
区

フ  
ロ  
ック

7

計  
算  
者



精  
算  
者



備  
考

(一) 283-2

(二) 319-1

点	①	②	③	④	⑤	⑥	③ × ⑤		② × ⑥	
	X	X-(定数)	X <sub>n-1</sub> -X <sub>n+1</sub>	Y	Y-(定数)	Y <sub>n-1</sub> -Y <sub>n+1</sub>	+	-	+	-
18	-153 868.856	-153.850 18.856	+ 13.754	-341 437.229	-34.420 17.229	21.416			236.967666	403.820076
19	888.284	38.284	+ 25.098	424.404	4.404	- 4.240			110.531692	162.324160
20	893.954	43.954	- 13.754	432.989	12.989	+21.416	178.650706			941.318664
17	874.530	24.530	- 25.098	445.820	25.820	+ 4.240	648.030360			104.007200
							826.681066	347.499258	566.144756	1044.326064
							479.181808			479.181808
									x <sup>1/2</sup> = 239.590904	
19	-153 888.284	-153.880 8.284	- 5.777	-341 424.404	-34.400 24.404	50.480	140.981908			418.176320
3	907.478	27.478	+ 44.168	411.733	11.733	+25.135			518.223144	690.659530
4	932.452	52.452	+ 5.777	449.539	49.539	+50.480			286.186802	2647.776960
22	913.255	33.255	- 44.168	462.213	62.213	-25.135	2747.823784			835.864425
							2888.806692	804.409947	1254.040745	3338.436490
							2084.395745			2084.395745
									x <sup>1/2</sup> = 1042.1978725	

# 面積計算書

工  
区

フ  
ロ  
ック

7

計  
算  
者



精  
算  
者



備  
考

(三) 保 7-1号  
(四) 302-1

点	①	②	③	④	⑤	⑥	③ × ⑤		② × ⑥	
	X	X-(定数)	X <sub>n-1</sub> -X <sub>n+1</sub>	Y	Y-(定数)	Y <sub>n-1</sub> -Y <sub>n+1</sub>	+	-	+	-
(三) 22	<sup>-153,</sup> 913.255	<sup>-153,910-</sup> 3.255	+8.508	<sup>-34,</sup> 467.213	<sup>-34,440-</sup> 22.213	-28.858			188.988204	93.932790
4	932.452	22.452	+29.888	449.539	9.539	+3.509			285.101632	78.184068
5	943.143	33.143	-8.508	465.722	25.722	+28.858	218.842776			956.440694
25	923.944	13.944	-29.888	478.397	38.397	-3.509	1147.609536			48.929496
							1366.452312	474.089836	142862286	1035.224762
							892.362476			892.362476
							x/2 = 446.181238			
(四) 25	<sup>-153,</sup> 923.944	<sup>-153,920-</sup> 3.944	+10.074	<sup>-34,</sup> 478.397	<sup>-34,460-</sup> 18.397	-26.491			185.331378	104.480504
5	943.143	23.143	+28.325	465.722	5.722	+1.139			162.075650	26.759877
6	952.269	32.269	-10.074	479.536	19.536	+26.491	196.805664			854.838079
27	933.069	13.069	-28.325	492.213	32.213	-1.139	912.433225			14.885591
							1109.238889	347.407028	119.266095	881.197956
							761.831861			761.831861
							x/2 = 380.9159305			

# 面積計算書

工  
区

フ  
ロ  
ック

7

計  
算  
者

精  
算  
者

備  
考

(比) 保 7-2 号

(川) 299-2 B

点	①	②	③	④	⑤	⑥	③ × ⑤		② × ⑥	
	X	X-(定数)	X <sub>n-1</sub> -X <sub>n+1</sub>	Y	Y-(定数)	Y <sub>n-1</sub> -Y <sub>n+1</sub>	+	-	+	-
(カ) 14	896.972 <sup>-153.</sup>	6.972 <sup>-153.890-</sup>	+ 11.227 <sup>-34.</sup>	479.806 <sup>-34.</sup>	19.806 <sup>-34.460-</sup>	- 25.252			222.361962	176.056944
24	916.385	26.385	+ 27.595	466.951	6.951	- 0.466			191.812845	17.295410
26	924.567	34.567	- 11.227	479.340	19.340	+ 25.252	217.130180			872.885884
13	905.159	15.159	- 27.595	492.203	32.203	+ 0.466	888.641785			7.063628
							1105.791965	414.174807	188.352354	879.949512
							691.597158			691.597158
							$X_{1/2} = 345.798579$			
(キ) 15	895.291 <sup>-153.</sup>	5.291 <sup>-153.890-</sup>	+ 17.732 <sup>-34.</sup>	477.260 <sup>-34.</sup>	17.260 <sup>-34.460-</sup>	- 15.399			306.054320	81.476109
23	914.704	24.704	+ 21.094	464.407	4.407	- 10.309			92.961258	254.673536
24	916.385	26.385	- 17.732	466.951	6.951	+ 15.399	123.255132			405.302615
14	896.972	6.972	+ 21.094	479.806	19.806	+ 10.309	447.787764			71.874348
							541.042896	399.015578	336.149645	478.176963
							142.027318			142.027318
							$X_{1/2} = 71.013659$			



# 面積計算書

工区

ブロック

7

計算者



精算者



備考

(九) 300  
(四) 277-4

点	①	②	③	④	⑤	⑥	③ × ⑤		② × ⑥	
	X	X-(定数)	X <sub>n-1</sub> -X <sub>n+1</sub>	Y	Y-(定数)	Y <sub>n-1</sub> -Y <sub>n+1</sub>	+	-	+	-
16	-153. 875.406	-153.800- 75.406	-0.461.	-34. 447.147	-34.400- 47.147	-42.945.	21.734767-		3239.310670-	
21	894.830	94.830+	39.298-	434.315	34.315-	+ 17.260.		1348.510870.		1637.765800-
23	914.704	114.704+	0.461-	464.407	64.407+	+ 42.945.		29.681627-		4925.963280.
15	895.291	95.291-	39.298-	477.260	77.260-	- 17.260.	3036.163480		1644.722660.	
							3057.888267-	1378.202497-	4883033330.	6562.72908.
							1678.695750-			1678.695750-
							x 1/2	839.847975-		
17	-153. 874.530	-153.870- 4.530	+ 18.548.	-34. 445.820	-34.430- 15.820	- 14.158.		293.429360.	64.135740.	
20	893.954	23.954+	20.300.	432.989	2.989-	- 11.505.		60.676700.	275.590770.	
21	894.830	24.830+	18.548.	434.315	4.315-	+ 14.158.	80.034620-			351.523140.
16	875.406	5.406-	20.300.	447.147	17.147+	+ 11.505.	369.084100-			62.896030.
							428.118720-	354.106060.	339.726570-	413.739170.
							74.012660-			74.012660-
							x 1/2	37.026330.		

# 面積計算書

工  
区

ブ  
ロ  
ック

7

計  
算  
者



精  
算  
者



備  
考

隅切

I, II

点	①	②	③	④	⑤	⑥	③ × ⑤		② × ⑥		
	X	X-(定数)	X <sub>n-1</sub> -X <sub>n+1</sub>	Y	Y-(定数)	Y <sub>n-1</sub> -Y <sub>n+1</sub>	+	-	+	-	
I	-153. 867.203	-153.860 7.203	+ 0.851	-34. 434.725	-34.430 4.725	- 4.157			4.020975	29.942871	
	1	869.707	+ 1.653	433.072	3.072	+ 2.504			5.078066		24.306328
	18	868.856	- 2.504	437.229	7.229	+ 1.653	18.101416				14.638968
							18.101416	9.098991	29.942871	38.945296	
							9.002425			9.002425	
							x 1/2	4.5012125			
								<u>4.50</u>			
II	-153. 903.320	-153.900 3.320	- 1.654	-34. 410.883	-34.409 1.883	- 2.503	3.114482			8.309960	
	II	905.824	+ 4.158	409.230	0.230	+ 0.850			0.956340		4.950400
	3	907.478	- 2.504	411.733	2.733	+ 1.653	6.843432				12.361134
							9.957914	0.956340	8.309960	17.311534	
							9.001574			9.001574	
							x 1/2	4.500787			
								<u>4.50</u>			

# 面積計算書

工区

ブロック

7

計算者



精算者



備考

間切

Ⅱ

Ⅲ

点	①	②	③	④	⑤	⑥	③ × ⑤		② × ⑥	
	X	X - (定数)	X <sub>n-1</sub> - X <sub>n+1</sub>	Y	Y - (定数)	Y <sub>n-1</sub> - Y <sub>n+1</sub>	+	-	+	-
Ⅲ 9	<sup>-153</sup> 965.921	<sup>-153.960</sup> 5.921	- 1.741	<sup>-36</sup> 505.629	<sup>-34.500</sup> 5.629	- 1.736	10.362989			10.278856
8	966.454	6.454	+ 0.721	502.059	2.059	- 4.337		1.486539		27.990988
7	966.642	6.642	+ 1.841	501.292	1.292	+ 1.736		2.378572		11.530512
Ⅳ 968.295	8.295	0.721		503.795	3.795	+ 4.337	2.736195			35.975415
							13.099184	3863.111	39.269854	67.505927
							9.236073			9.236073
							x <sup>1/2</sup> =	4.6180365 =		
								4.62 =		
Ⅱ 12	<sup>-153</sup> 929.869	<sup>-153.929</sup> 0.869	- 0.899	<sup>-34</sup> 529.625	<sup>-34.529</sup> 0.625	- 2.465	0.561875			2.142.085
11	930.660	1.660	+ 4.064	529.719	0.719	+ 0.725		2.922016		1.203500
10	933.933	4.933	+ 0.899	530.350	1.350	+ 2.465		1.213650		12.159805
Ⅲ 931.559	2.559	4.064		532.184	3.184	- 0.725	12.939776			1.855275
							13.501651	4.135666	3.997360	13.263345
							9.365985			9365985
							x <sup>1/2</sup> =	4.6829925 =		
								4.68 =		

# 面積計算書

工区

ブロック

7

計算者



精算者





備考

水路 1号線 202  
2号線 202

\*  
1

\*  
2

点	①	②	③	④	⑤	⑥	③ × ⑤		② × ⑥		
	X	X-(定数)	X <sub>n-1</sub> -X <sub>n+1</sub>	Y	Y-(定数)	Y <sub>n-1</sub> -Y <sub>n+1</sub>	+	-	+	-	
1	-153 869.707	-153.860 9.707	+ 34.464	-34 433.072	-34.410 23.072	- 26.346			795.153408	255.740822	
2	903.320	43.320	+ 37.771	440.883	0.883	- 21.339			33.351793	924.405480	
3	907.478	47.478	- 34.464	441.733	1.733	+ 26.346	59.726112				1250.855388
18	868.856	8.856	- 37.771	437.229	27.229	+ 21.339	1028.466559				188.978184
							1088.19671	928.505201	1180.146102	1439.833572	
							259.687470				259.687470
									x 1/2 = 129.843735		
									<u>129.84</u>		
11	-153 930.660	-153.930 0.660	+ 32.521	-34 529.719	-34.500 29.719	- 28.291			966.491599	18.672060	
8	966.454	36.454	+ 35.261	502.059	2.059	- 24.090			72.602399	878.176860	
9	965.921	35.921	- 32.521	505.629	5.629	+ 28.291	183.060709				1016.241011
10	933.933	3.933	- 35.261	530.350	30.350	+ 24.090	1070.671350				94.745970
									1253.232059	1039.093898	896.848920
									214.138061		1110.986981
											214.138061
									x 1/2 = 107.0690305		
									<u>107.07</u>		

計年 月 算日	50 8 6	計 算 者		檢 查 者	
---------------	--------------	-------------	---	-------------	---

B. NO. 7

各筆面積計算書

地番	算式	隅切	地積	摘要
1	283-2		239.59	
2	319-1		1,042.19	
3	保 7-1号		1,146.18	
4	302-1		380.91	
5	281-1		630.89	
6	303 -1, -9, -10, -11		1,037.40	
7	保 7-2号		345.79	
8	299-2B		71.01	
9	300		839.84	
10	277-4		37.00	
		合計	5,070.80	
		全体	5,070.86	
		差	- 0.06	
			4,278.83	空地 8筆
			791.97	保留地 2筆
			129.84	水路 1号線(2)
			107.07	" 2号線(2)