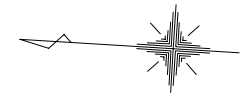
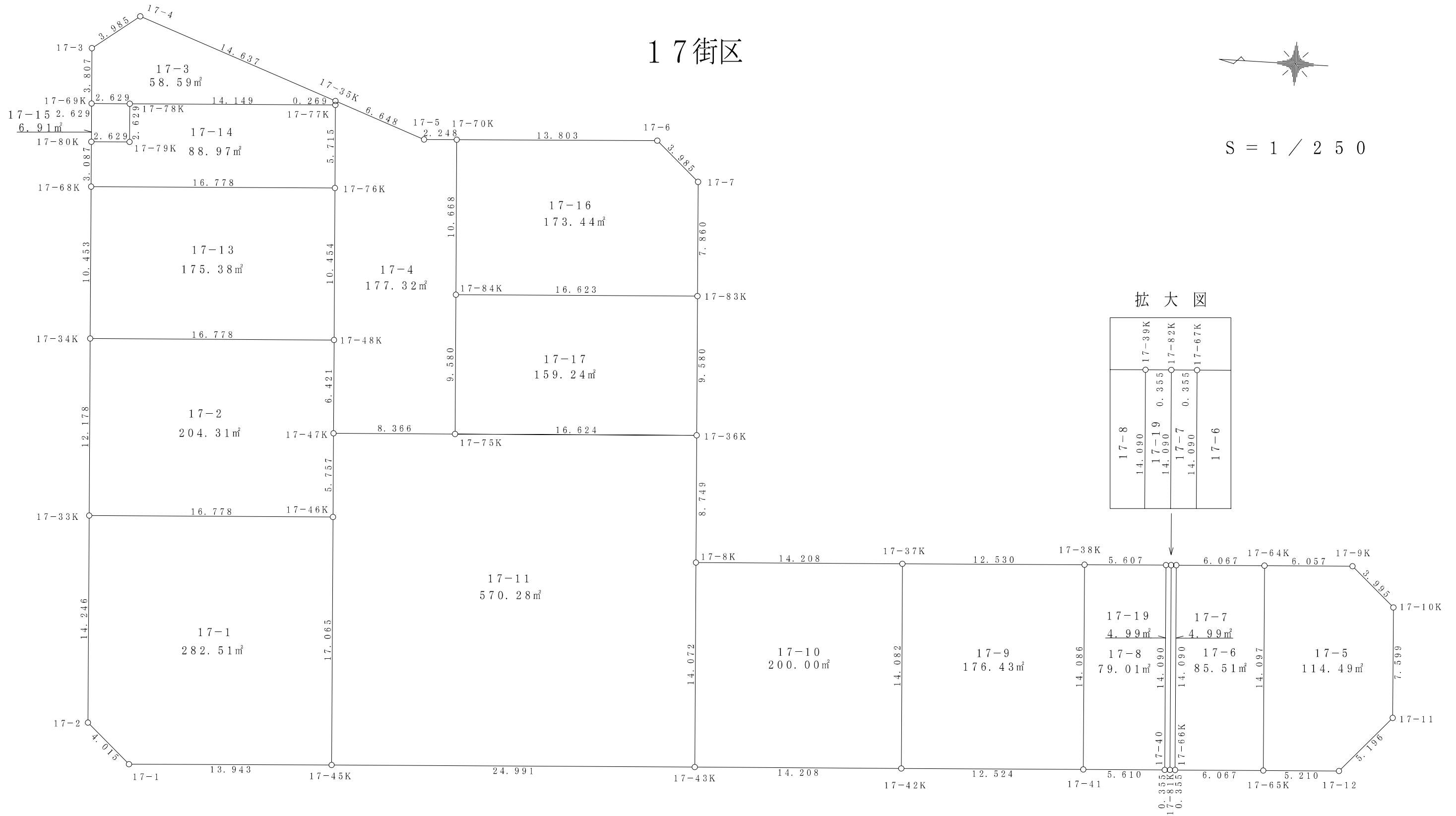


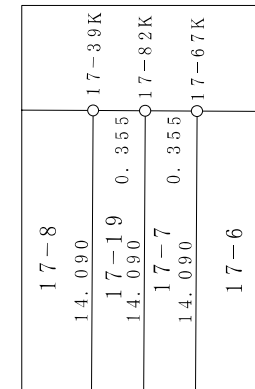
# 17街区



S = 1 / 250



### 拡大図



面積 (座標法) 計算書

地番 = 17-1

測点名	[1] X(i)	[2] X(i+1)-X(i-1)	[3] Y(i)	[4] Y(i+1)-Y(i-1)	[2]*[3]	[1]*[4]	方向角	夾角	距離
17-46K	-149284.763	-17.695	-38557.317	-16.113	682271.724315	2405425.386219	266-49-56	269-59-46	17.065
17-45K	-149285.706	12.977	-38574.356	-17.832	-500579.417812	2662062.709392	356-44-22	269-54-26	13.943
17-1	-149271.786	16.908	-38575.149	1.889	-652228.619292	-281974.403754	41-54-39	225-10-17	4.015
17-2	-149268.798	3.775	-38572.467	16.906	-145611.062925	-2523538.298988	86-49-59	224-55-20	14.246
17-33K	-149268.011	-15.965	-38558.243	15.150	615582.349495	-2261410.366650	176-50-10	270-00-11	16.778
合計				倍面積 面積	-565.026219 282.51	565.026219 282.51			66.047

面積 (座標法) 計算書

地番 = 17-2

測点名	[1] X(i)	[2] X(i+1)-X(i-1)	[3] Y(i)	[4] Y(i+1)-Y(i-1)	[2]*[3]	[1]*[4]	方向角	夾角	距離
17-33K	-149268.011	17.425	-38558.243	11.233	-671877.384275	-1676727.567563	86-49-55	269-59-45	12.178
17-34K	-149267.338	-16.079	-38546.084	13.085	619782.484636	-1953163.117730	176-50-10	270-00-15	16.778
17-48K	-149284.090	-17.107	-38545.158	-5.485	659392.017906	818823.233650	266-49-50	269-59-40	6.421
17-47K	-149284.445	-0.673	-38551.569	-12.159	25945.205937	1815149.566755	266-50-00	180-00-10	5.757
17-46K	-149284.763	16.434	-38557.317	-6.674	-633650.947578	996326.508262	356-50-10	270-00-10	16.778
合計				倍面積 面積	-408.623374 204.31	408.623374 204.31			57.912

面積 (座標法) 計算書

地番 = 17-3

測点名	[1] X(i)	[2] X(i+1)-X(i-1)	[3] Y(i)	[4] Y(i+1)-Y(i-1)	[2]*[3]	[1]*[4]	方向角	夾角	距離
17-69K	-149266.445	2.835	-38529.940	3.656	-109232.379900	-545718.122920	86-50-16	269-59-58	3.807
17-3	-149266.235	-2.979	-38526.139	6.190	114769.368081	-923957.994650	143-09-42	236-19-26	3.985
17-4	-149269.424	-16.947	-38523.750	-2.606	652861.991250	388996.118944	199-57-14	236-47-32	14.637
17-35K	-149283.182	-13.773	-38528.745	-5.264	530656.404885	785826.670048	266-48-30	246-51-16	0.269
17-77K	-149283.197	14.112	-38529.014	-1.050	-543721.445568	156747.356850	356-50-08	270-01-38	14.149
17-78K	-149269.070	16.752	-38529.795	-0.926	-645451.125840	138223.158820	356-50-18	180-00-10	2.629
合計				倍面積 面積	-117.187092 58.59	117.187092 58.59			39.476

面積 (座標法) 計算書

地番 = 17-4

測点名	[1] X(i)	[2] X(i+1)-X(i-1)	[3] Y(i)	[4] Y(i+1)-Y(i-1)	[2]*[3]	[1]*[4]	方向角	夾角	距離
17-75K	-149292.798	7.822	-38551.105	-10.029	-301546.743310	1497257.471142	356-49-14	269-59-53	8.366
17-47K	-149284.445	8.708	-38551.569	5.947	-335707.062852	-887794.594415	86-49-50	270-00-36	6.421
17-48K	-149284.090	0.932	-38545.158	16.849	-35924.087256	-2515287.632410	86-50-10	180-00-20	10.454
17-76K	-149283.513	0.893	-38534.720	16.144	-34411.504960	-2410033.033872	86-49-49	179-59-39	5.715
17-77K	-149283.197	0.331	-38529.014	5.975	-12753.103634	-891967.102075	86-48-30	179-58-41	0.269
17-35K	-149283.182	-6.234	-38528.745	-2.000	240188.196330	298566.364000	199-57-21	293-08-51	6.648
17-5	-149289.431	-8.493	-38531.014	-2.143	327243.901902	319927.250633	176-47-10	156-49-49	2.248
17-70K	-149291.675	-2.836	-38530.888	-10.526	109273.598368	1571444.171050	266-49-08	270-01-58	10.668
17-84K	-149292.267	-1.123	-38541.540	-20.217	43282.149420	3018241.761939	266-49-21	180-00-13	9.580
合計				倍面積 面積	-354.655992 177.32	354.655992 177.32			60.369

面積 (座標法) 計算書

地番 = 17-5

測点名	[1] X(i)	[2] X(i+1)-X(i-1)	[3] Y(i)	[4] Y(i+1)-Y(i-1)	[2]*[3]	[1]*[4]	方向角	夾角	距離
17-64K	-149348.939	-5.270	-38556.746	14.407	203194.051420	-2151670.164173	176-52-03	270-01-52	6.057
17-9K	-149354.987	-9.029	-38556.415	-2.329	348125.871035	347847.764723	221-44-35	224-52-32	3.995
17-10K	-149357.968	-3.400	-38559.075	-10.247	131100.855000	1530471.098096	266-50-20	225-05-45	7.599
17-11	-149358.387	3.049	-38566.662	-11.456	-117589.752438	1711049.681472	311-52-18	225-01-58	5.196
17-12	-149354.919	8.670	-38570.531	-4.160	-334406.503770	621316.463040	356-47-54	224-55-36	5.210
17-65K	-149349.717	5.980	-38570.822	13.785	-230653.515560	-2058785.848845	86-50-11	270-02-17	14.097
合計				倍面積 面積	-228.994313 114.49	228.994313 114.49			42.154

面積 (座標法) 計算書

地番 = 17-6

測点名	[1] X(i)	[2] X(i+1)-X(i-1)	[3] Y(i)	[4] Y(i+1)-Y(i-1)	[2]*[3]	[1]*[4]	方向角	夾角	距離
17-65K	-149349.717	5.280	-38570.822	-14.407	-203653.940160	2151681.372819	356-52-21	270-02-10	6.067
17-66K	-149343.659	6.836	-38571.153	13.738	-263672.401908	-2051683.187342	86-50-05	269-57-44	14.090
17-67K	-149342.881	-5.280	-38557.084	14.407	203581.403520	-2151582.886567	176-48-24	269-58-19	6.067
17-64K	-149348.939	-6.836	-38556.746	-13.738	263573.915656	2051755.723982	266-50-11	270-01-47	14.097
合計				倍面積 面積	-171.022892 85.51	171.022892 85.51			40.321

面積 (座標法) 計算書

地番 = 17-7

測点名	[1] X(i)	[2] X(i+1)-X(i-1)	[3] Y(i)	[4] Y(i+1)-Y(i-1)	[2]*[3]	[1]*[4]	方向角	夾角	距離
17-66K	-149343.659	-0.424	-38571.153	-14.088	16354.168872	2103953.467992	356-55-40	270-05-35	0.355
17-81K	-149343.305	1.132	-38571.172	14.050	-43662.566704	-2098273.435250	86-50-05	269-54-25	14.090
17-82K	-149342.527	0.424	-38557.103	14.088	-16348.211672	-2103937.520376	176-55-40	270-05-35	0.355
17-67K	-149342.881	-1.132	-38557.084	-14.050	43646.619088	2098267.478050	266-50-05	269-54-25	14.090
合計				倍面積 面積	-9.990416 4.99	9.990416 4.99			28.890

面積 (座標法) 計算書

地番 = 17-8

測点名	[1] X(i)	[2] X(i+1)-X(i-1)	[3] Y(i)	[4] Y(i+1)-Y(i-1)	[2]*[3]	[1]*[4]	方向角	夾角	距離
17-38K	-149336.575	-4.823	-38557.437	14.379	185962.518651	-2147310.611925	176-47-22	269-56-36	5.607
17-39K	-149342.173	-6.376	-38557.123	-13.755	245840.216248	2054201.589615	266-50-05	270-02-43	14.090
17-40	-149342.951	4.823	-38571.192	-14.379	-186028.859016	2147402.292429	356-49-55	269-59-50	5.610
17-41	-149337.350	6.376	-38571.502	13.755	-245931.896752	-2054135.249250	86-50-46	270-00-51	14.086
合計				倍面積 面積	-158.020869 79.01	158.020869 79.01			39.393

面積 (座標法) 計算書

地番 = 17-9

測点名	[1] X(i)	[2] X(i+1)-X(i-1)	[3] Y(i)	[4] Y(i+1)-Y(i-1)	[2]*[3]	[1]*[4]	方向角	夾角	距離
17-42K	-149324.845	13.285	-38572.200	13.362	-512431.677000	-1995278.578890	86-49-29	270-01-10	14.082
17-37K	-149324.065	-11.730	-38558.140	14.763	452286.982200	-2204471.171595	176-47-01	269-57-32	12.530
17-38K	-149336.575	-13.285	-38557.437	-13.362	512235.550545	1995435.315150	266-50-46	270-03-45	14.086
17-41	-149337.350	11.730	-38571.502	-14.763	-452443.718460	2204667.298050	356-48-19	269-57-33	12.524
合計				倍面積 面積	-352.862715 176.43	352.862715 176.43			53.222

面積 (座標法) 計算書

地番 = 17-10

測点名	[1] X(i)	[2] X(i+1)-X(i-1)	[3] Y(i)	[4] Y(i+1)-Y(i-1)	[2]*[3]	[1]*[4]	方向角	夾角	距離
17-42K	-149324.845	13.407	-38572.200	-14.829	-517137.485400	2214338.126505	356-53-50	270-04-21	14.208
17-43K	-149310.658	14.967	-38572.969	13.281	-577321.627023	-1982994.848898	86-49-21	269-55-31	14.072
17-8K	-149309.878	-13.407	-38558.919	14.829	516959.427033	-2214116.180862	176-51-25	270-02-04	14.208
17-37K	-149324.065	-14.967	-38558.140	-13.281	577099.681380	1983172.907265	266-49-29	269-58-04	14.082
合計				倍面積 面積	-400.004010 200.00	400.004010 200.00			56.570

面積 (座標法) 計算書

地番 = 17-11

測点名	[1] X(i)	[2] X(i+1)-X(i-1)	[3] Y(i)	[4] Y(i+1)-Y(i-1)	[2]*[3]	[1]*[4]	方向角	夾角	距離
17-36K	-149309.396	-17.080	-38550.183	-7.814	658437.125640	1166703.620344	266-50-31	270-01-17	8.749
17-8K	-149309.878	-1.262	-38558.919	-22.786	48661.355778	3402174.880108	266-49-21	179-58-50	14.072
17-43K	-149310.658	24.172	-38572.969	-15.437	-932385.806668	2304908.627546	356-49-06	269-59-45	24.991
17-45K	-149285.706	25.895	-38574.356	15.652	-998882.948620	-2336619.870312	86-49-56	270-00-50	17.065
17-46K	-149284.763	1.261	-38557.317	22.787	-48620.776737	-3401751.894481	86-50-00	180-00-04	5.757
17-47K	-149284.445	-8.035	-38551.569	6.212	309761.856915	-927354.972340	176-49-14	269-59-14	8.366
17-75K	-149292.798	-24.951	-38551.105	1.386	961888.620855	-206919.818028	176-49-14	180-00-00	16.624
合計				倍面積 面積	-1140.572837 570.28	1140.572837 570.28			95.624

面積 (座標法) 計算書

地番 = 17-13

測点名	[1] X(i)	[2] X(i+1)-X(i-1)	[3] Y(i)	[4] Y(i+1)-Y(i-1)	[2]*[3]	[1]*[4]	方向角	夾角	距離
17-34K	-149267.338	17.329	-38546.084	9.511	-667965.089636	-1419681.651718	86-50-08	269-59-58	10.453
17-68K	-149266.761	-16.175	-38535.647	11.364	623314.090225	-1696267.472004	176-49-58	269-59-50	16.778
17-76K	-149283.513	-17.329	-38534.720	-9.511	667768.162880	1419835.492143	266-50-10	270-00-12	10.454
17-48K	-149284.090	16.175	-38545.158	-11.364	-623467.930650	1696464.398760	356-50-10	270-00-00	16.778
合計				倍面積 面積	-350.767181 175.38	350.767181 175.38			54.463

面積 (座標法) 計算書

地番 = 17-14

測点名	[1] X(i)	[2] X(i+1)-X(i-1)	[3] Y(i)	[4] Y(i+1)-Y(i-1)	[2]*[3]	[1]*[4]	方向角	夾角	距離
17-68K	-149266.761	16.923	-38535.647	2.155	-652138.754181	-321669.869955	86-49-27	269-59-29	3.087
17-80K	-149266.590	-2.454	-38532.565	3.227	94558.914510	-481683.285930	176-50-18	270-00-51	2.629
17-79K	-149269.215	-2.480	-38532.420	2.770	95560.401600	-413475.725550	86-50-18	90-00-00	2.629
17-78K	-149269.070	-13.982	-38529.795	3.406	538723.593690	-508410.452420	176-50-08	269-59-50	14.149
17-77K	-149283.197	-14.443	-38529.014	-4.925	556474.549202	735219.745225	266-49-49	269-59-41	5.715
17-76K	-149283.513	16.436	-38534.720	-6.633	-633356.657920	990197.541729	356-49-58	270-00-09	16.778
合計				倍面積 面積	-177.953099 88.97	177.953099 88.97			44.987

面積 (座標法) 計算書

地番 = 17-15

測点名	[1] X(i)	[2] X(i+1)-X(i-1)	[3] Y(i)	[4] Y(i+1)-Y(i-1)	[2]*[3]	[1]*[4]	方向角	夾角	距離
17-79K	-149269.215	2.480	-38532.420	-2.770	-95560.401600	413475.725550	356-50-18	270-00-00	2.629
17-80K	-149266.590	2.770	-38532.565	2.480	-106735.205050	-370181.143200	86-50-18	270-00-00	2.629
17-69K	-149266.445	-2.480	-38529.940	2.770	95554.251200	-413468.052650	176-50-18	270-00-00	2.629
17-78K	-149269.070	-2.770	-38529.795	-2.480	106727.532150	370187.293600	266-50-18	270-00-00	2.629
合計				倍面積 面積	-13.823300 6.91	13.823300 6.91			10.516

面積 (座標法) 計算書

地番 = 17-16

測点名	[1] X(i)	[2] X(i+1)-X(i-1)	[3] Y(i)	[4] Y(i+1)-Y(i-1)	[2]*[3]	[1]*[4]	方向角	夾角	距離
17-84K	-149292.267	17.189	-38541.540	9.730	-662490.531060	-1452613.757910	86-49-08	269-59-55	10.668
17-70K	-149291.675	-13.189	-38530.888	11.426	508183.881832	-1705806.678550	176-47-07	269-57-59	13.803
17-6	-149305.456	-16.752	-38530.114	-1.882	645456.469728	280992.868192	221-47-45	225-00-38	3.985
17-7	-149308.427	-3.408	-38532.770	-10.504	131319.680160	1568335.717208	266-48-46	225-01-01	7.860
17-83K	-149308.864	16.160	-38540.618	-8.770	-622816.386880	1309438.737280	356-49-13	270-00-27	16.623
合計				倍面積 面積	-346.886220 173.44	346.886220 173.44			52.939

面積 (座標法) 計算書

地番 = 17-17

測点名	[1] X(i)	[2] X(i+1)-X(i-1)	[3] Y(i)	[4] Y(i+1)-Y(i-1)	[2]*[3]	[1]*[4]	方向角	夾角	距離
17-75K	-149292.798	17.129	-38551.105	8.643	-660341.877545	-1290337.653114	86-49-21	270-00-07	9.580
17-84K	-149292.267	-16.066	-38541.540	10.487	619208.381640	-1565628.004029	176-49-13	269-59-52	16.623
17-83K	-149308.864	-17.129	-38540.618	-8.643	660162.245722	1290476.511552	266-48-59	269-59-46	9.580
17-36K	-149309.396	16.066	-38550.183	-10.487	-619347.240078	1565807.635852	356-49-14	270-00-15	16.624
合計				倍面積 面積	-318.490261 159.24	318.490261 159.24			52.407

面積 (座標法) 計算書

地番 = 17-19

測点名	[1] X(i)	[2] X(i+1)-X(i-1)	[3] Y(i)	[4] Y(i+1)-Y(i-1)	[2]*[3]	[1]*[4]	方向角	夾角	距離
17-40	-149342.951	1.132	-38571.192	14.049	-43662.589344	-2098119.118599	86-50-05	270-04-06	14.090
17-39K	-149342.173	0.424	-38557.123	14.089	-16348.220152	-2104081.875397	176-45-59	269-55-54	0.355
17-82K	-149342.527	-1.132	-38557.103	-14.049	43646.640596	2098113.161823	266-50-05	270-04-06	14.090
17-81K	-149343.305	-0.424	-38571.172	-14.089	16354.176928	2104097.824145	356-45-59	269-55-54	0.355
合計				倍面積 面積	-9.991972 4.99	9.991972 4.99			28.890