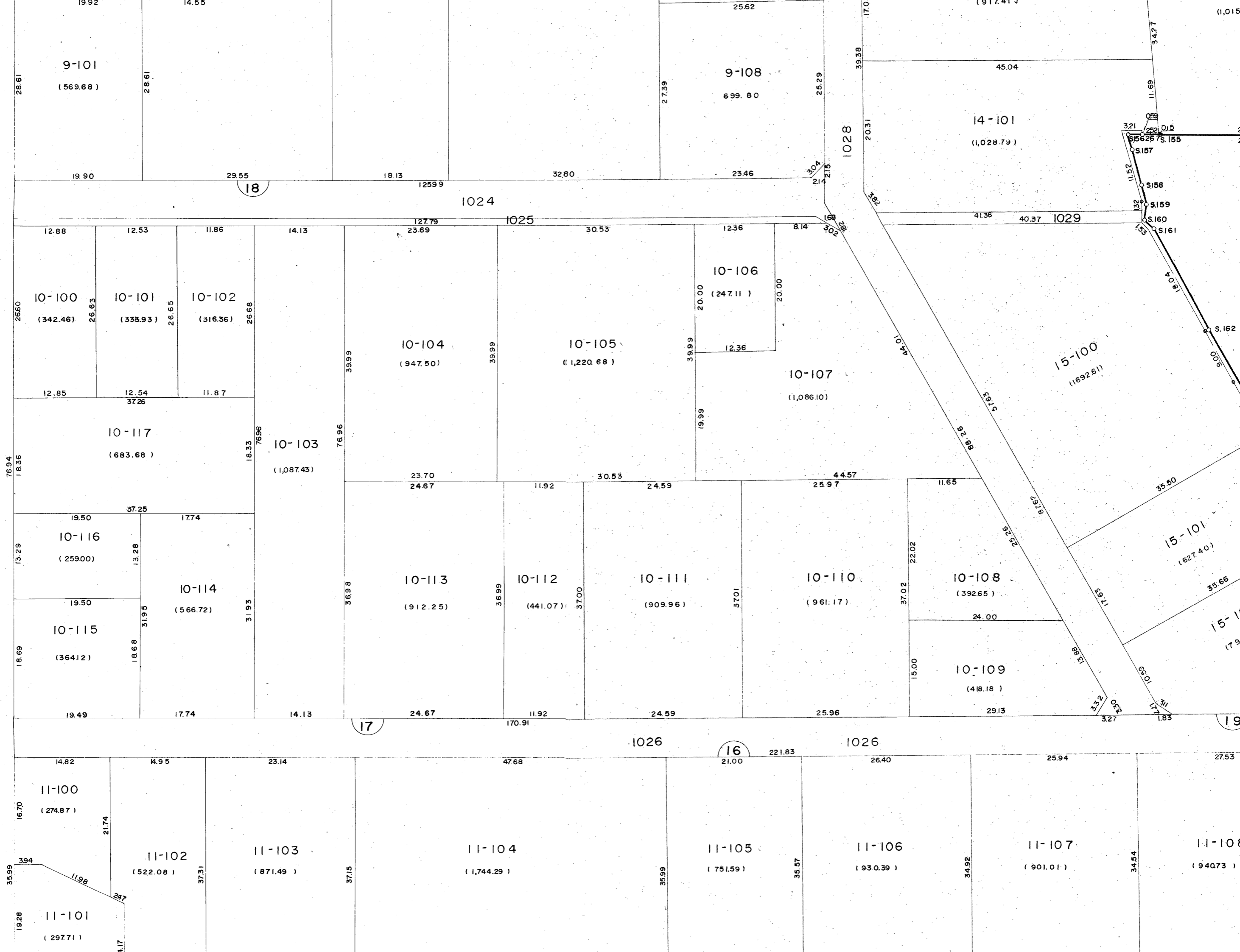


1009



9-101
(569.68)

9-108
699.80

14-101
(1,028.79)

10-100
(342.46)

10-101
(338.93)

10-102
(316.36)

10-104
(947.50)

10-105
(1,220.68)

10-106
(247.11)

10-107
(1,086.10)

15-100
(1,692.61)

10-117
(683.68)

10-103
(1,087.43)

10-116
(259.00)

10-114
(566.72)

10-113
(912.25)

10-112
(441.07)

10-111
(909.96)

10-110
(961.17)

10-108
(392.65)

10-115
(364.12)

10-109
(418.18)

15-101
(627.40)

11-100
(274.87)

11-102
(522.08)

11-103
(871.49)

11-104
(1,744.29)

11-105
(751.59)

11-106
(930.39)

11-107
(901.01)

11-108
(940.73)

18

1024

1025

1028

1029

17

1026

16

1026

19