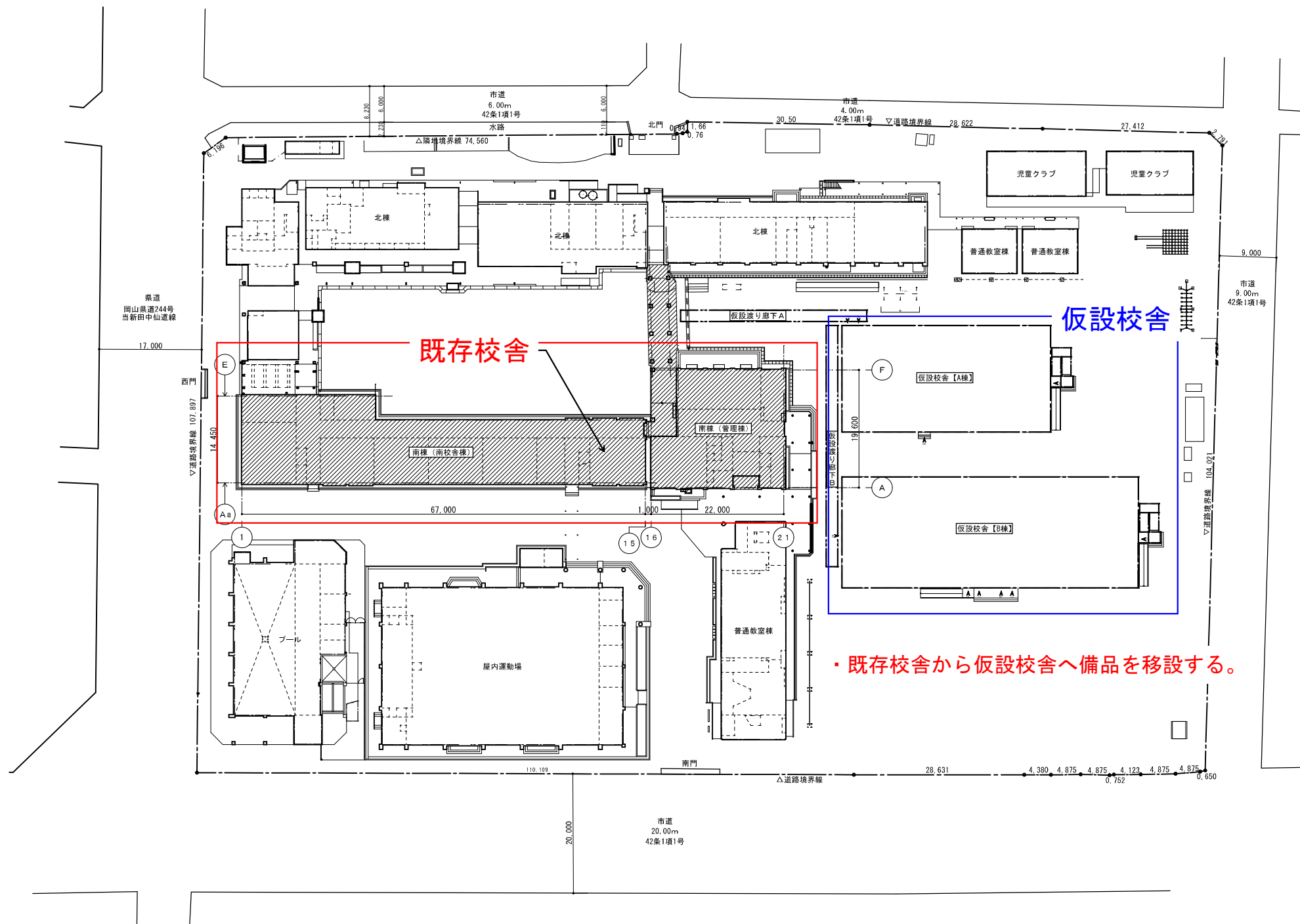


工事場所：岡山市北区中仙道一丁目18番20号（岡山市立西小学校）

付近見取図 1 : 2 5 0 0

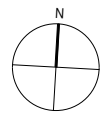


既存校舎

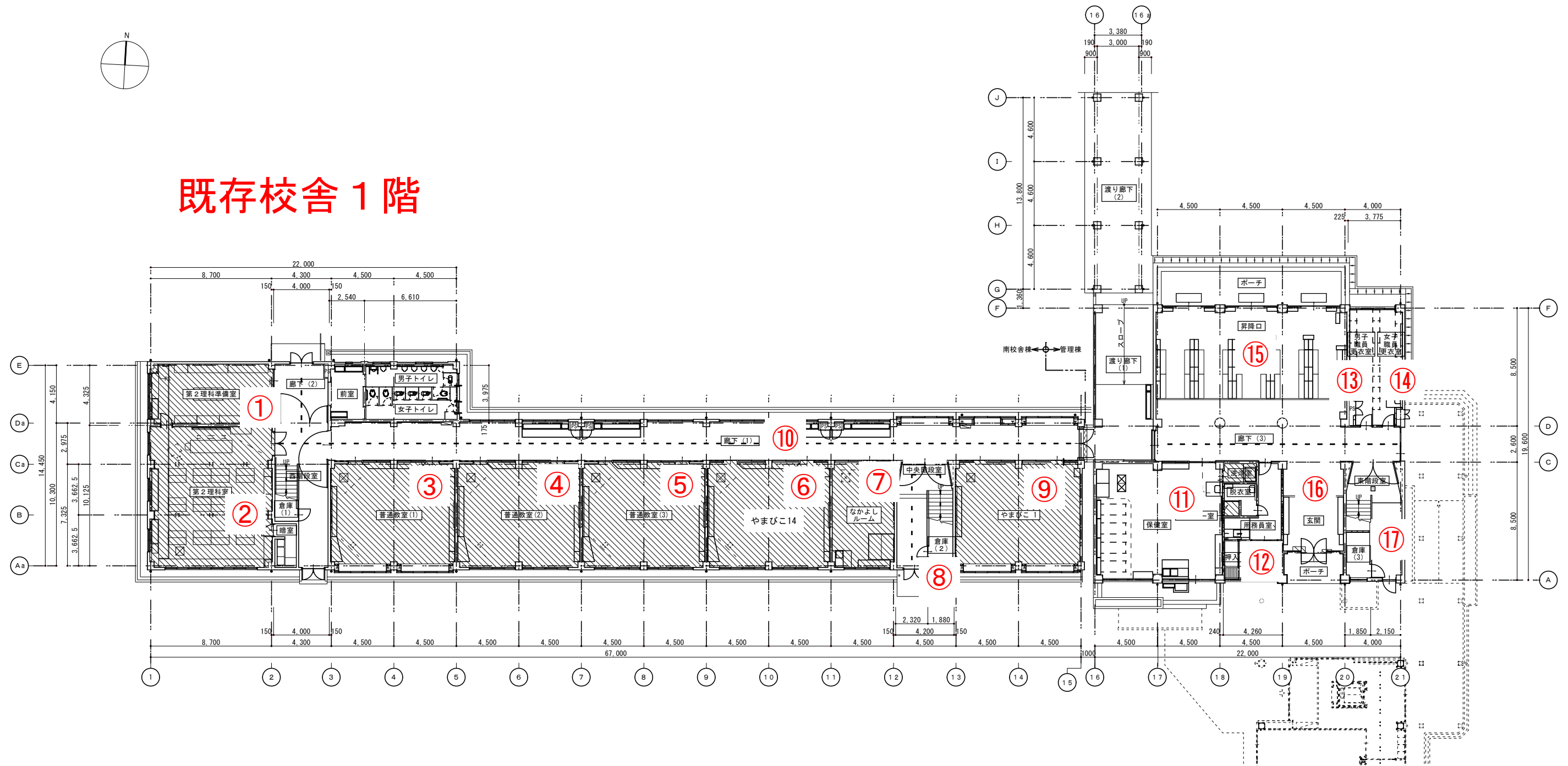
仮設校舎

・既存校舎から仮設校舎へ備品を移設する。

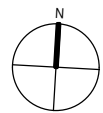
配置図 1 : 4 0 0



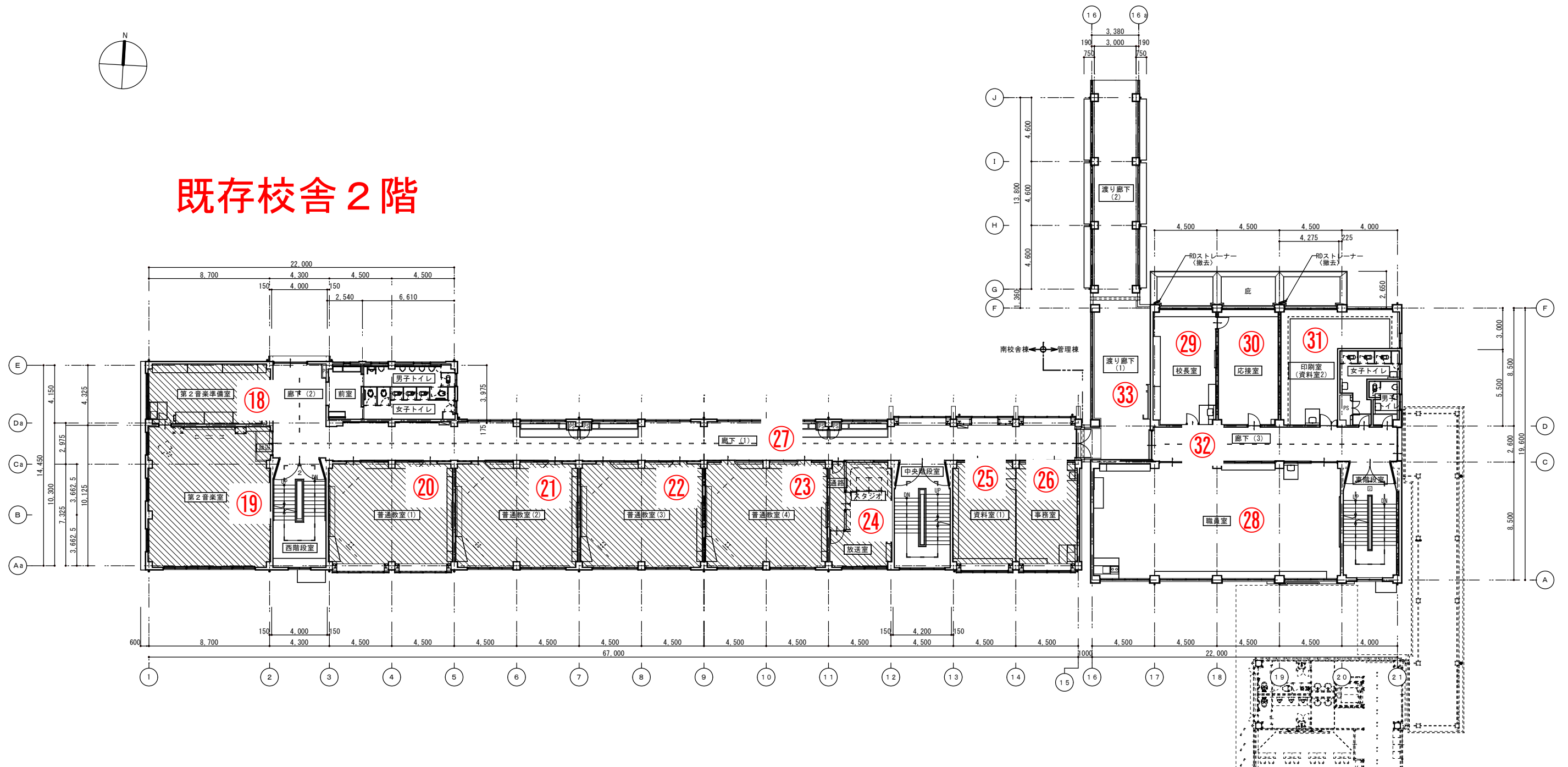
既存校舎 1 階



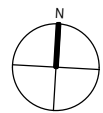
1 階平面図 1 : 150



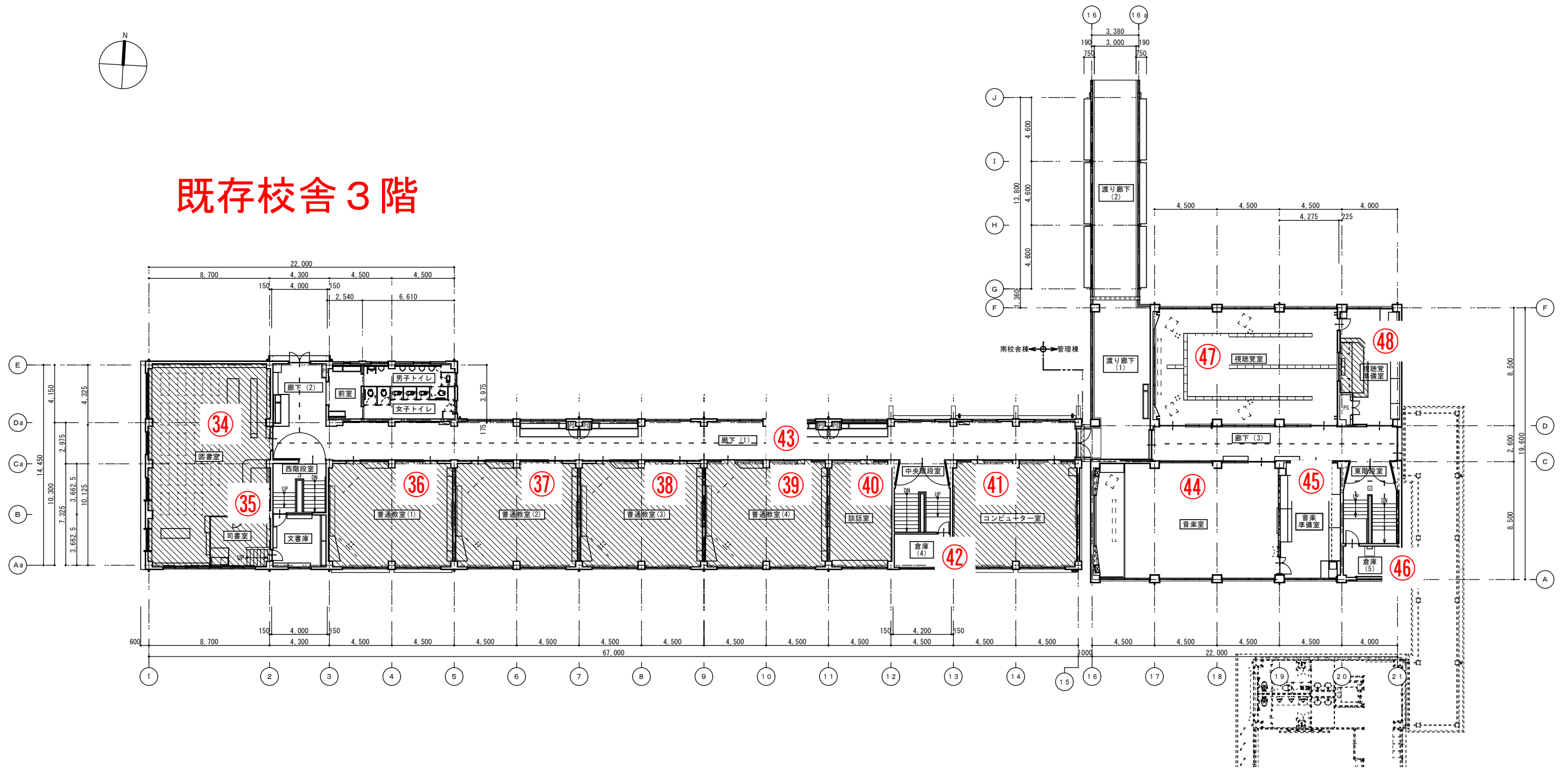
既存校舎 2 階



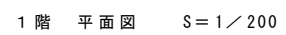
2 階平面図 1 : 150

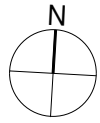


既存校舎 3 階

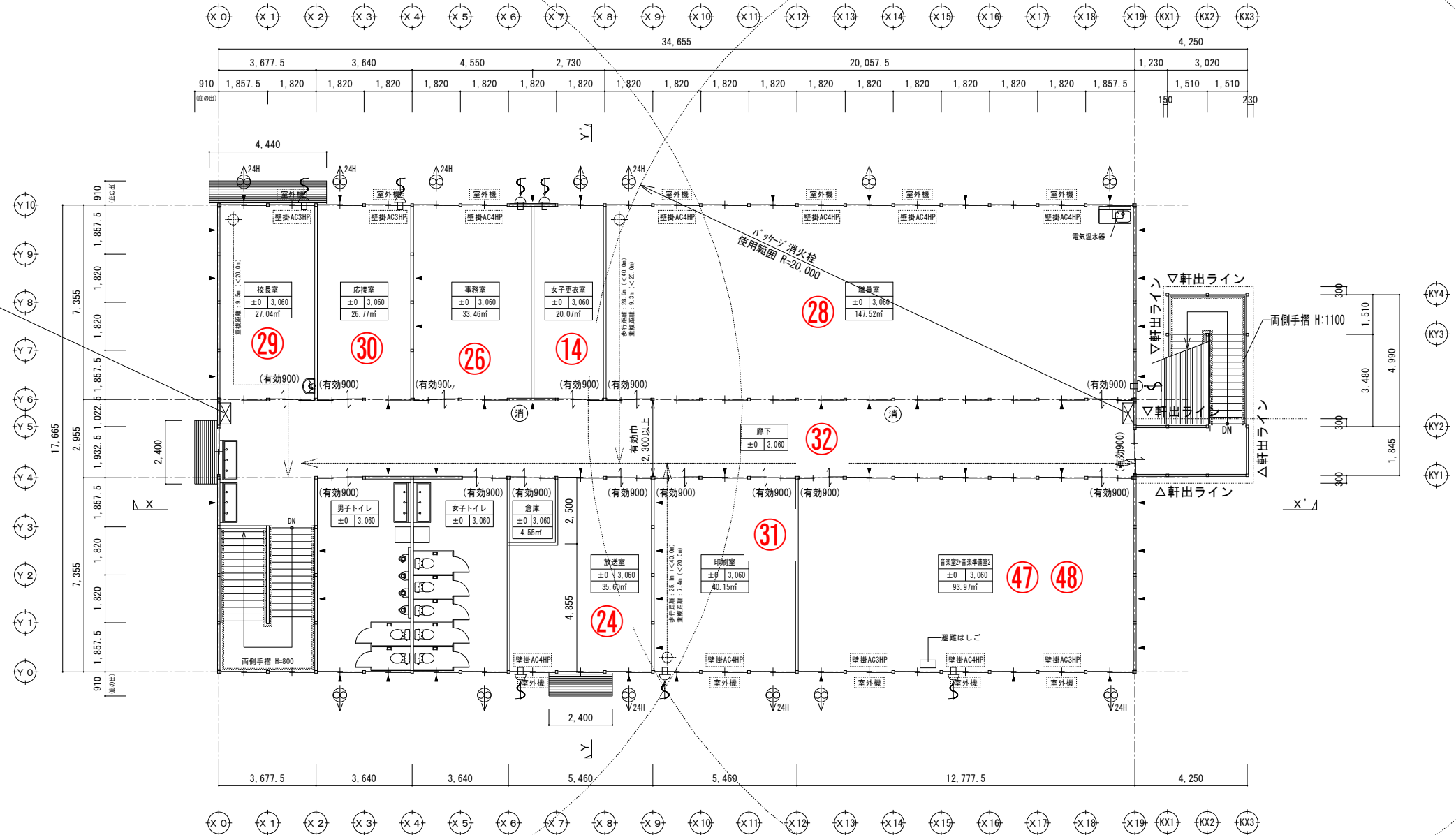


3 階平面図 1 : 150

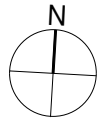




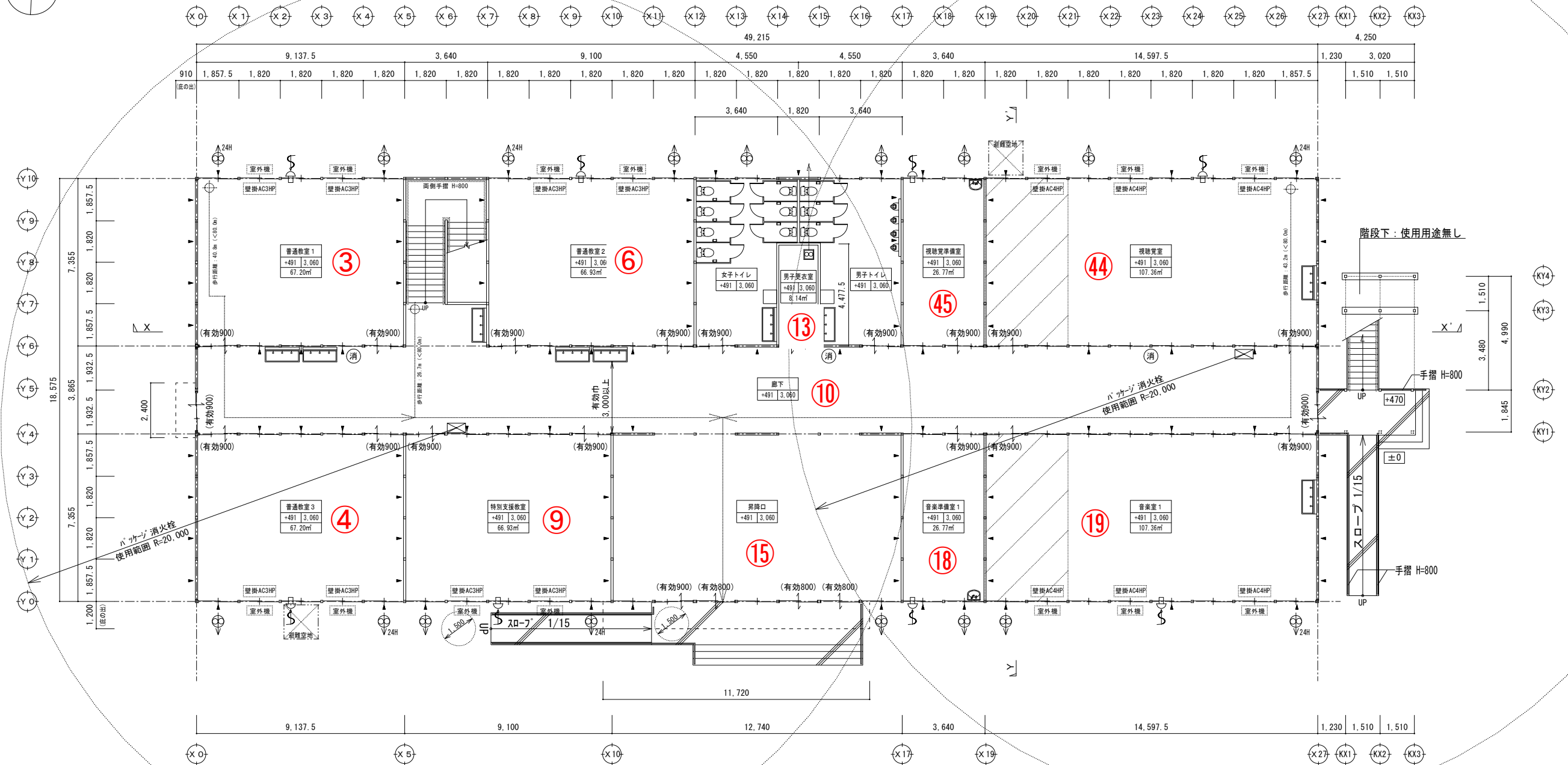
仮設校舎北棟 2 階



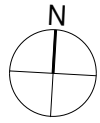
2 階 平面図 S = 1 / 200



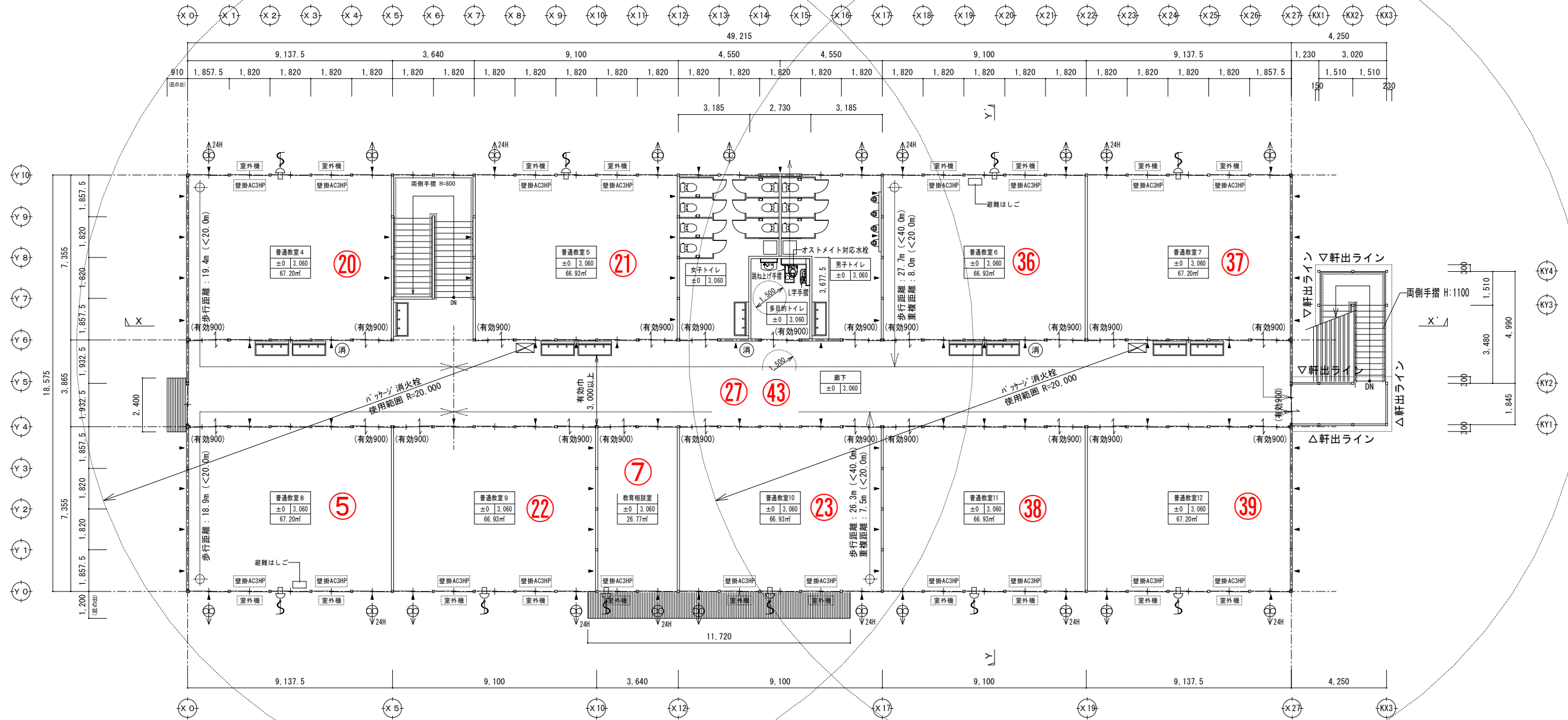
仮設校舎南棟 1 階



1 階 平面図 S=1/200



仮設校舎南棟 2 階



2 階 平面図 S = 1 / 200